

Company Profile

PT. Pertamina Bina Medika Indonesia Healthcare Corporation (IHC)



PT. Pertamina Bina Medika IHC (“PBM IHC”)

is a state-owned hospital holding with a network covering almost all of Indonesia



37
Hospital

1 Class A Hospital
(*on progress*)
6 Class B Hospital



66
Clinic

4 Klinik Utama
62 Klinik Pratama



4.635
Beds Capacity

23 Class C Hospital
7 Class D Hospital



15.354
Workers

1.036 dokter umum
1.329 dokter spesialis
6.703 perawat
2.815 nakes lain
3.471 non medis

Brand Philosophy



Mom and Baby

The shape of the IHC logo resembles a mom holding her baby, reflecting that IHC always provides services humanistically and welcomes patients with compassion.



Hospital

For the most part, the IHC logo forms a plus sign which is the hallmark of a hospital. It reflects that IHC is all set to help patients in all situations.



Blue

It fosters a feeling of calm and is generally associated with professionalism. This reflects IHC's excellence in providing workplace wellness services for professionals.



Green

It symbolizes a source of life, freshness and growth, reflecting that IHC's is always willing to grow and renew itself to become a modern hospital of the future.

Brand Positioning

Targeted Customer

Patients, by prioritizing facilities, comfort and the availability of reliable doctors.

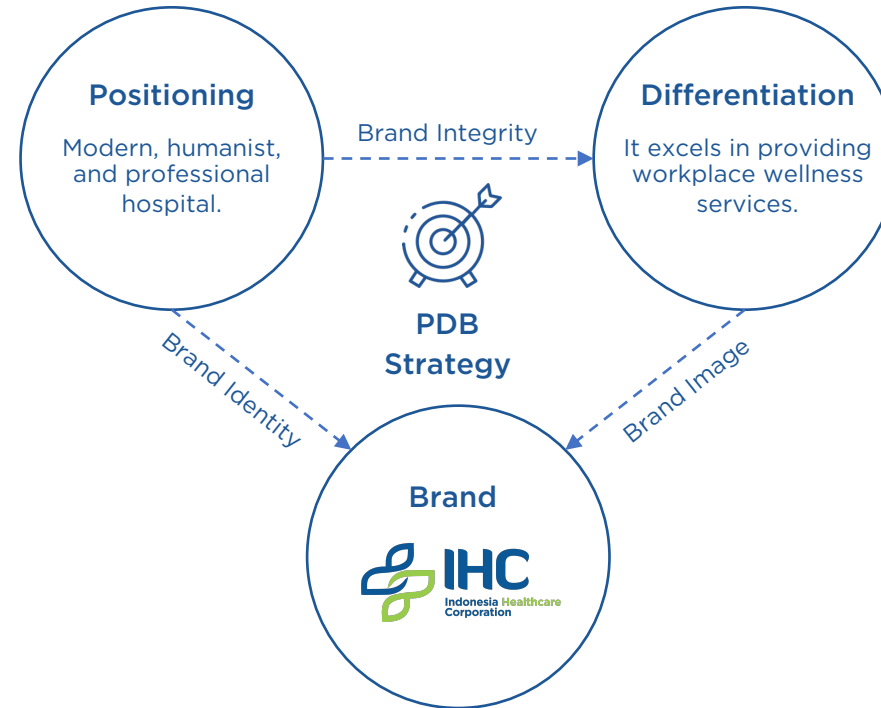
Frame of Reference

Modern, Humanist and Professional Hospital

Point of Differentiation

Modern - Humanist - Professional

Reason-to-Believe



Positioning Statement

For patients, by prioritizing facilities, comfort and reliable doctors. IHC is a modern, humanist and professional hospital. Unlike other hospitals, IHC excels in providing workplace wellness services. It is supported by IHC's 15 attributes in providing services to the community.



Modern

1. Virtual Hospital
2. Integrated electronic medical record
3. Clinical Pathway Collaboration
4. Command Center
5. Strategic Partnership



Humanist

6. Strategic Partnership
7. Simple service procedures
8. Certified officers (friendliness, empathy, responsive, compassion, etc.)
9. Homecare Services



Professional

10. Superior homecare services in mental health & occupational health services
11. Serving large state-owned companies
12. International standard facilities Center of Excellence
13. special VIP & VVIP services
14. Onsite Clinic
15. Uniform Façade

Brand Value

In the context of hospital services, the main values to be communicated are:

modern, humanist, & professional.



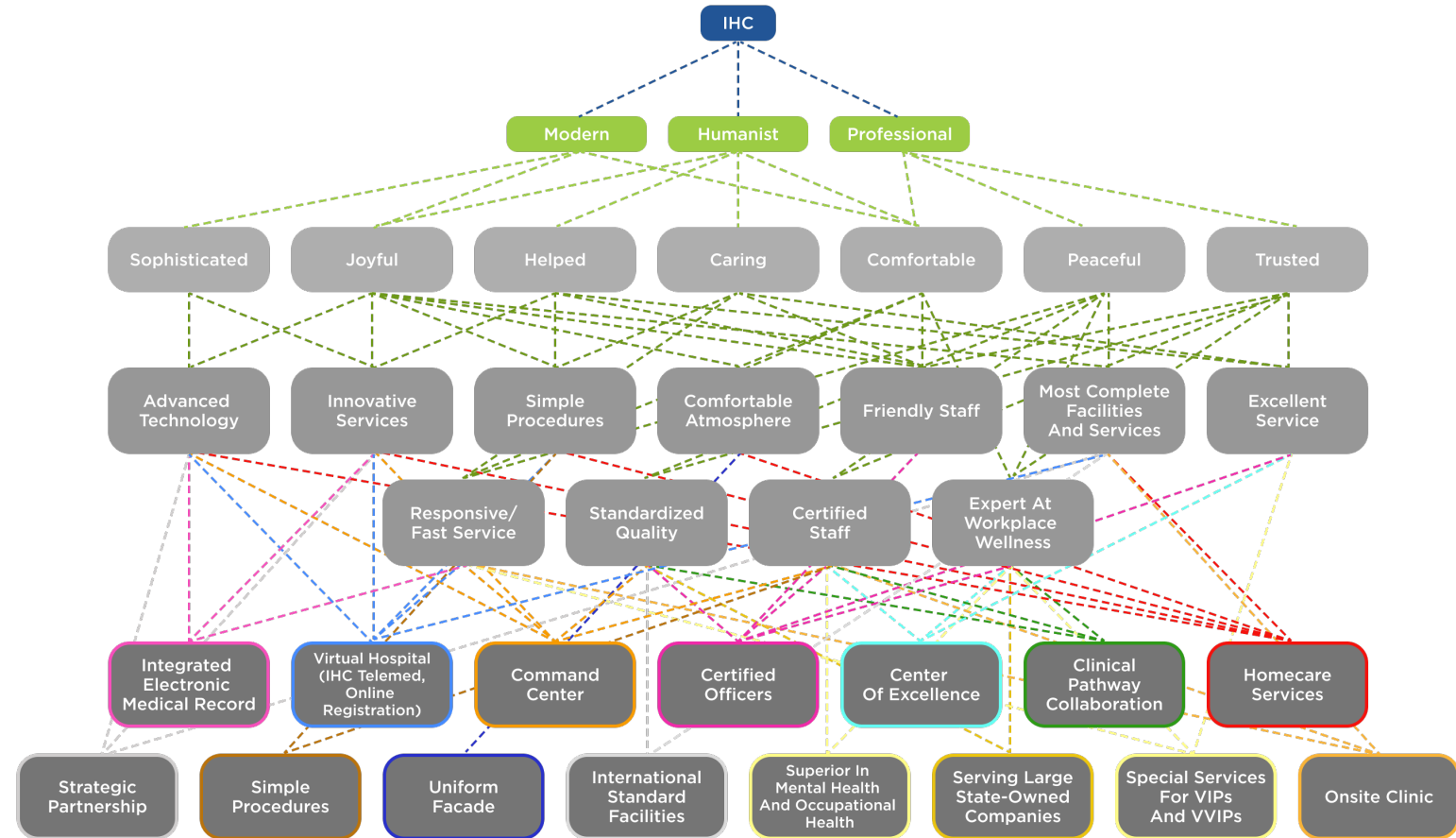
IHC

Core Values

Emotional Benefit

Functional Benefit

Key Attributes



IHC During Pandemic



RS Covid Pertamina Jaya RS Modular Simprug

RS Covid Asrama Haji
Embarkasi Jakarta
Ekstensi RSPJ

RS Modular
Tanjung Duren

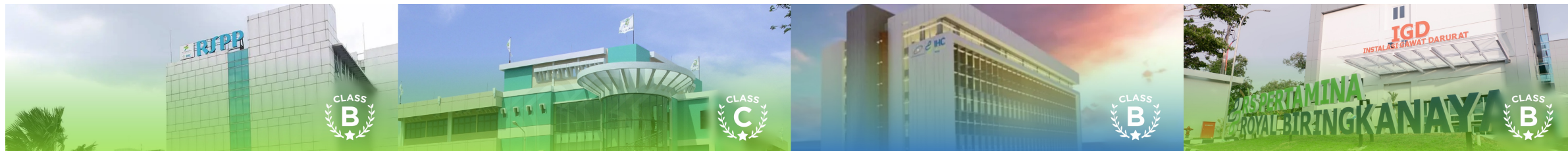
RS Covid Wisma Haji
Lampung Ekstensi
RS Bintang Amin



PBM IHC managed built thousands of intensive care beds in a few months. In addition, PBM IHC also provide vaccination centers and served communities in establishing herd immunity.

IHC Flagship Hospitals

On Stream



Rumah Sakit Pusat Pertamina

Rumah Sakit Pertamina Balikpapan

Merial Tower RS PELNI

RSP Otak dan Jantung Royal Biringkanaya

Location	Jakarta
Bed Capacity	250
CoE	Cardiology, Neurology, Oncology

Location	Balikpapan
Bed Capacity	200
CoE	Cardiology, Neurology, Rehab Medic

Location	Jakarta
Bed Capacity	600 (Incl. RS Exiting)
CoE	Cardiology, Oncology, Eye

Location	Makassar
Bed Capacity	100
CoE	Cardiology, Neurology

New Project



Bali International Hospital

Rumah Sakit Panorama Balikpapan

Rumah Sakit Kanker Pertamina Unpad

Location	Bali	Bed	226
CoE	Cardiology, Oncology, Neurology, Gastro, Orthopoedy, MCU		
Total Capex	USD 96M	Status	Construction
Onstream	Nov 2023 Softlaunching Q3 2024 Grandlaunching		

Location	Balikpapan	Bed	100
CoE	General		
Total Capex	USD 15M	Status	Construction
Onstream	Q3 2024 Grand Launching		

Location	Bandung	Bed	75
CoE	Oncology (Cancer Center)		
Total Capex	USD 25M		
Status	Ground Breaking on Feb 24		
Onstream	Q2 2025 Grand Launching		



Bali International Hospital



Class A
Hospital

62.000m²
Approximate Building
Area

50.000m²
Land Area

16.000m²
Building Site Area

Q4 2022 - Q1 2024
Construction



**Grand Inna Bali Beach (GIBB) Area,
Sanur, Bali Indonesia Land**
Collaboration with PT Hotel Indonesia
Natura (HIN)

Facilities 236 Beds
Radiotherapy
Radiology Diagnostic

Minimal Invasive
Hemodialysis



**Collaboration with Mayo Clinic since
2021 with Scope:** Culture, Governance,
Facility Design, Medical Service Plan,
Equipment Review, Staff Recruitment,
Quality & Safety

Partnership Hospital RS Kanker Pertamina UNPAD

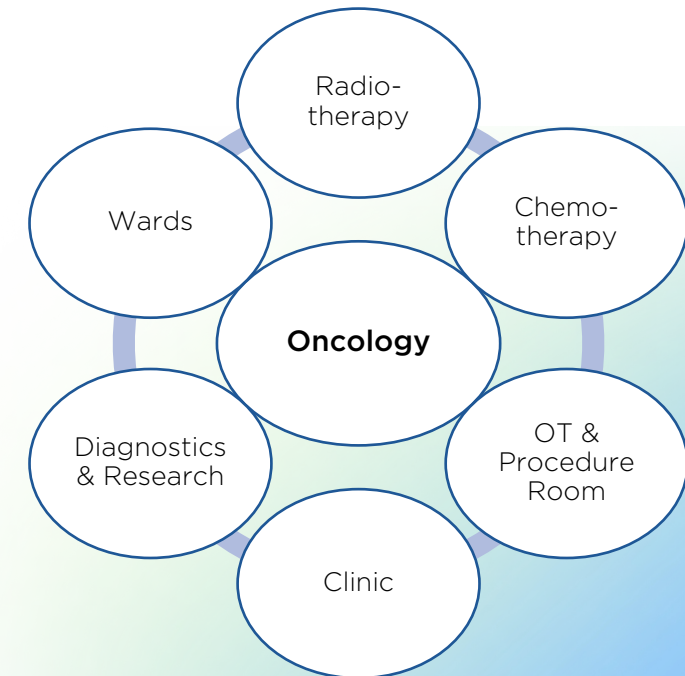


75
Beds

8
ICU

2
OT

2025 Onstream



Oncology Hospital

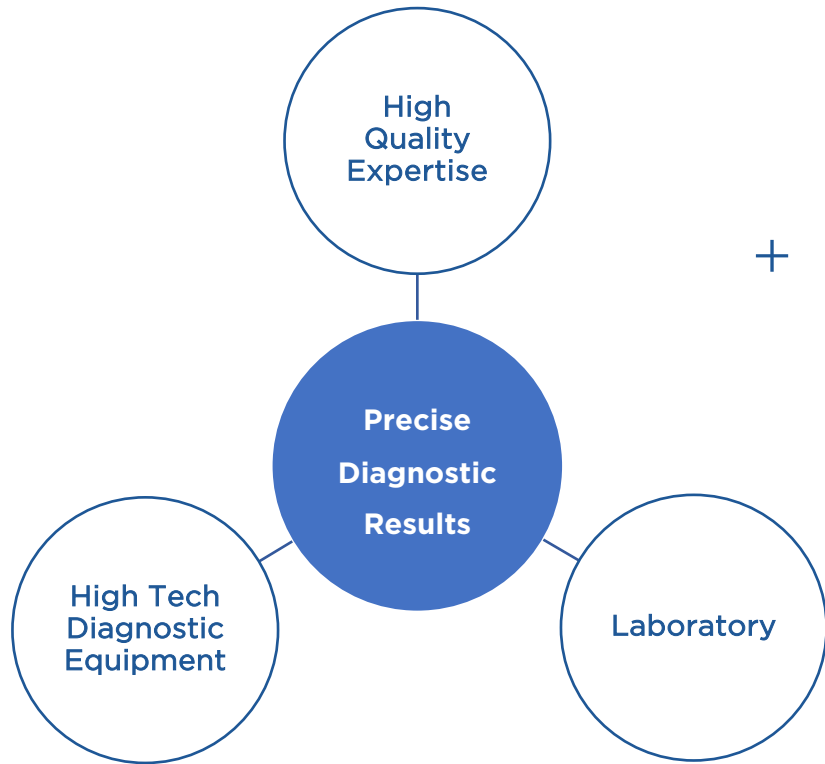


Collaboration with
Universitas Padjadjaran

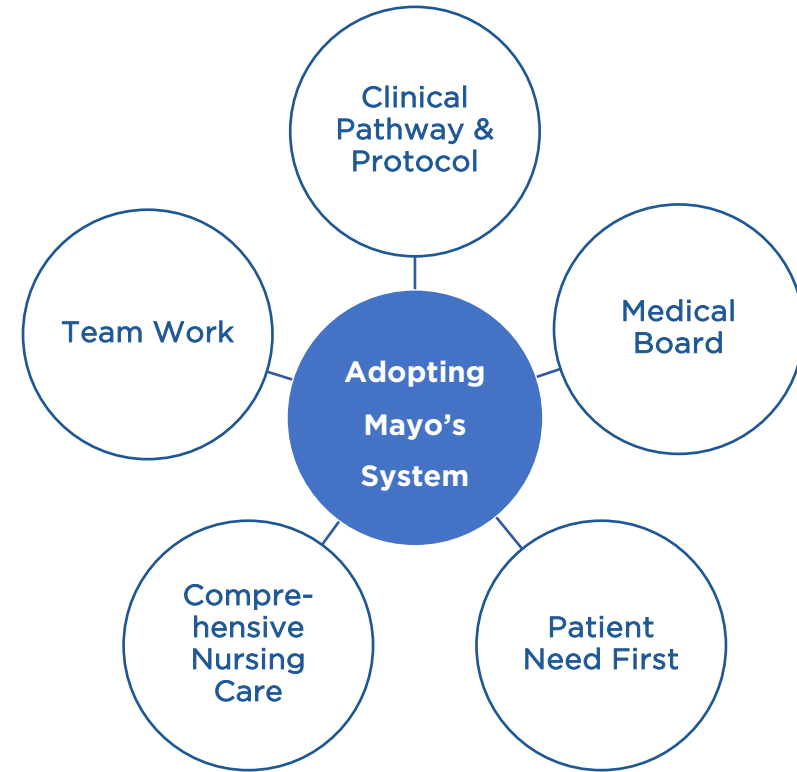
Stakeholders Collaboration



Collaboration With Mayo Clinic since 2021 with scope:
Culture, Governance, Facility Design, Medical Service Plan, Equipment Review, Staff Recruitment, Quality Assurance.



+

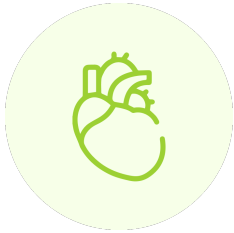


Qualified Doctors

Fellowship & Observership
Diaspora & Foreign Doctor

Medical Quality Assurance
Periodically Hands-On & Supervising

Providing Technology Centres of Excellence (Congo)



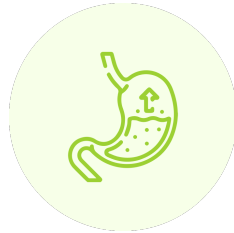
Cardiology



Oncology



Neurology



Gastro-EN-HEPA



Orthopedic

Advanced Medical Technology





**RESPON
CEPAT**  **24/7**
Karena Anda adalah Prioritas Kami



CALL CENTER IHC
150442

CHAT BOT
WWW.PERTAMEDIKA.CO.ID

IHC Offers a Comprehensive Portfolio of Healthcare Services

General Services



Outpatient

Supported by more than >1,000 professional healthcare workers, advanced medical equipment and integrated digital system

Inpatient/Emergency Department

- Supported by a team of trained healthcare professionals who are available to meet their specific medical needs
- ICU(a) & ICCU(b)

Home-care

Provides a diverse range of care and treatment services in the patient's home where the patient feels most comfortable in

Training Centre

Provides healthcare training services for medical personnel and the general public through an internationally certified team

Managed care

Provides a healthcare delivery system that assists a company in managing healthcare expenses



Environmental Sanitation

Provides pest control and disinfection services for office spaces that are of similar standards to the hospitals

Baby Day Care

Pediatricians and psychologists that prioritize children's health, growth and development

Ambulance Assistance & Medical Team

Carries out medical transport services under the supervision of medical personnel

Golden care

Provides care for older patients through doctors and nurses trained to address the special needs of seniors

Covid-19 lab

Equipped with the COBAS SARS-CoV-2 Machine that provides reliable high-quality results Ability to carry out more than 2,000 tests/day

IHC Offers a Comprehensive Portfolio of Healthcare Services

Specialty Services



Cardiology Center

- Provides cardiovascular treatment and surgical procedures such as ECG testing, pacemaker placement, endovascular interventions
- Coronary artery revascularization
- Coronary artery bypass grafting
- Cardiac congenital surgery

Oncology Center

- Focuses on cancer screening and diagnostics
- Radiotherapy
- Chemotherapy

Neurology Center

- Focuses on rehabilitation and recovery of spine related illnesses
- Spinal cord trauma treatment
- Stereostatic radio surgery
- Intracranial nerve decompression
- Spinal tap therapy

Gastroenterology Center

- Provides diagnosis and treatment via gastrointestinal endoscopic procedures
- Biopsy
- Polypectomy
- Gastrointestinal hemorrhage

Orthopaedic Center

Provides surgical treatments and procedures such as amputation, muscle repair and reconstruction and incision and excision of bone osteotomy or osteotomy



Geriatrics Center

Provides therapy and rehabilitation procedures for back, neck, bowel and bladder along with orthopaedics and lymphedema treatment

Kidney Center

- Uses a unique and non-invasive method to treat stones in the kidneys or ureter (Extracorporeal Shockwave Lithotripsy)
- Hemodialysis
- Percutaneous renal biopsy

Obstetrics and Gynecology

- Provides maternal and fetal medicine, reproductive endocrinology and infertility along with labor and delivery services
- Reproductive endocrinology & infertility treatment
- Urogynecology

Dermatology, Plastics and Cosmetics Treatment

Provides clinical, surgical and laboratory procedures for dermatology services and cosmetics procedure

Consistently Achieved Multiple National Accreditations and Third Party Recognition as a Leading Healthcare Operator with Accredited Facilities

Sertifikasi ISO

- ISO 9001:2015 Sistem Manajemen Quality
- ISO 45001:2018 Sistem Manajemen K3
- ISO 14001:2015 Sistem Manajemen Lingkungan

BUMN Marketeers Award 2021

- The Most Promising Company in Strategic Marketing
- The Most Promising Company in Marketing 3.0
- Best of the Best (subsidiary category)
- CMO of the Year: Dr. dr. Fathema Djan Rachmat

Healthcare Asia Awards 2021

- Hospital of the Year - Indonesia
- COVID Management Initiative of the Year - Indonesia (Accolades for Covid-19 management)

Marketeers OMNI Brands of the Year 2021

- Award winning campaign for Patient Experience Enhancement Through Omni Channel Platform Solution In Healthcare Services (Recognition for digitalisation implementation and superior marketing)

Hospital Accreditations



Perdana

Paripurna



Multiple national accreditations from the Indonesia Commission for Hospital Accreditation



Preparing for JCI international accreditation



Full Cycle Occupational Health & Industrial Hygiene



- Focus on Preventive Program
- Help Customer to Gain a Healthier Lifestyle Through Wellness Program
- Help Company to Create a Healthy Workplace

- One Medical Solution in Your Hand
- Reach Multi Segment Market

Managed Care Pertamedika IHC

As a Third Party Administrator (TPA)

We have a health service product that integrates financing and providing health care in a system that manages costs, provides easy access for participants, so that the financing is efficient and effective, and appropriate.

Payment Arrangement

01. Administration Fee
 - Percentage of the total cost of participant health services at Provider Managed Care (Clinics/Hospitals).
 - The cost of health services at the clinic/hospital is paid by the insurance company.

02. Membership Fee
 - Fees for each participant/year.
 - The cost of health services at the hospital/clinic is paid by the insurance company.

Managed Care Benefits



Family Doctor Based Primary Health Services



Tiered Service System

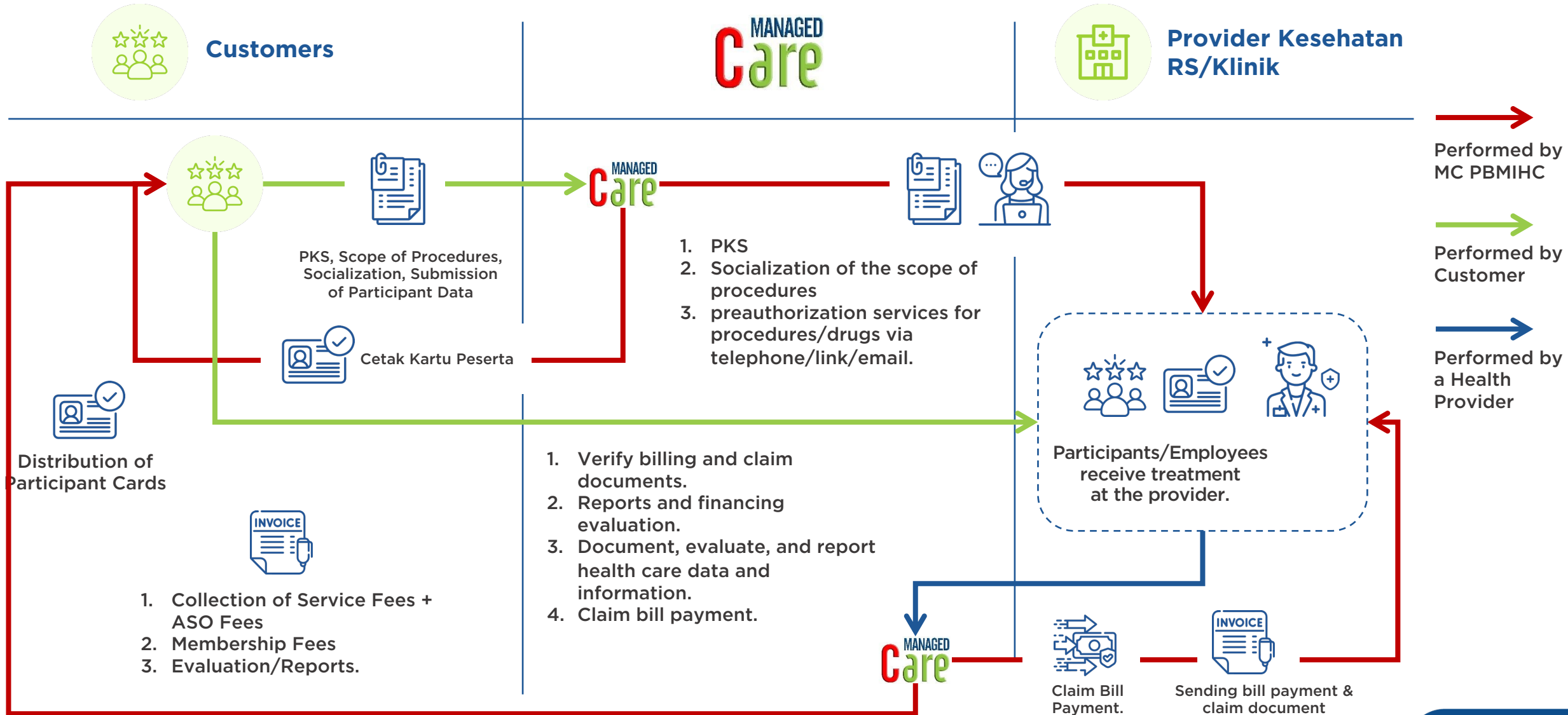


Cashless



Home Clinic/PPK1 as "GATE KEEPER"

The Advantage of Managed Care



OHIH Services

HRA (Health Risk Assessment)



- Identification of hazard factors / Health Risks (Health Risk Assessment-HRA) at work site
- Risk Evaluation & Magnitude of Health Risks at work site
- Controlling health risks at work site

Fit to Work



Health Check as the following:

- Daily Check Up
- Fitness for task & health Surveillance
- MCU Pre Employment
- MCU Annually (Berkala)
- Customized Health Check Up
- Return to work

Promotional Program



- Creating promotional programs for companies based on the results of employee health examination and the review results of health service benefit programs for workers and families
- Corporate Wellness program
- Work related disease program workshop
- Fatigue & stress management
- Pest Control
- Vaccination for employees
- Providing occupational nutrition

Occupational Health Services



- Occupational health services at Hospitals & Clinics for employees and families
- ASO (administration service only) Health Services for workers and families
- Joint provision of clinics by several companies (employees only)

OHIH Services

Klinik Onsite



- Providing clinics in the company environment (promotive, preventive, curative, rehabilitative)
- Ambulans rescue
- Clinic management
- Waste management
- Vaccination

Medivac



- Medical Evacuation service is a medical emergency response service for every project, operation, work site, ship, and other assets within the scope of activities operated by the company.
- Drafting the MERP (Medical Evacuation & Evacuation Route Mapping)
- Trauma Center
- Medical Evacuation
- Call Center

Training Center



First aider training is carried out by Health Workers who have obtained ToT (Training Of Trainer) certification to improve/maintain worker competency as first aider.

Industrial Hygiene



- Occupational nutrition
- Canteen inspection
- Environmental measurements
- Measurement of noise, lighting, vibration, chemical content in the air, dust, odor, radiation, assessment of workplace sanitation

IHC Group

Pertamedika IHC Business

Unit Hospital

1. RS Pusat Pertamina
2. RS Pertamina Jaya
3. RS Pertamina Balikpapan
4. RS Pertamina Cirebon
5. RS Pertamina Pangkalan Brandan
6. RS Pertamina Palembang
7. RS Pertamina Prabumulih
8. RS Pertamina Tarakan
9. RS Pertamina Tanjung
10. RS Pertamina Sorong
11. RS Pertamina Cilacap
12. RS Pertamina Balongan
13. RS Pertamina Dumai
14. RS Pertamina Rantau
15. RS Otak dan Jantung Pertamina Royal Biringkanaya

Subsidiary of Hospital

Pertamedika IHC

1. RS Pelni
2. RS Krakatau Medika
3. RS Bakti Timah Pangkalpinang
4. RS Medika Stania Sungailiat
5. RS Bakti Timah Muntok
6. RS Bakti Timah Karimun
7. RS Pelabuhan Jakarta
8. RS Pelabuhan Cirebon
9. RS Pelabuhan Palembang
10. RS Port Medical Center
11. RS PHC Surabaya
12. RS Gatoel
13. RS Toeloengredjo
14. RS Perkebunan Jember Klinik

15. RS Medika Utama
16. RS Lavalette
17. RS Wonolangan
18. RS Djatiroto
19. RS Elizabeth
20. RS Kaliwates
21. RS Bhakti Husada
22. Bali International Hospital

Pertamedika IHC Operational Cooperation Hospital (KSO)

1. RS Universitas Indonesia
2. RS Bintang Amin
3. RS Umi Rosnati
4. RSU Pekerja (KBN)

Members of Hospital

Pertamedika IHC

1. RS Cut Meutia
2. RS dr. G.L Tobing
3. RS Bangkatan
4. RS Tanjung Selamat
5. RS Sri Pamela
6. RS Sei Dadap
7. RS Sri Torgamba
8. RS Membang Muda
9. RS Pabatu
10. RS Laras
11. RS Balimbingan
12. RS Tandun
13. RS PTPN VIII Subang
14. RS Parindu
15. RS Danau Salak
16. RS Bukit Asam Medika
17. RS LNG Badak

18. RS Semen Gresik
19. RS Semen Padang
20. RS Antam Medika
21. RSI Garam
22. RS Petrokimia Gresik
23. RS Graha Husada
24. RS Petrokimia Driyorejo Gresik
25. RS PKT Bontang
26. RS Prima Sangatta
27. RS Medika Utama Permata
28. RS Medika Utama Manggar
29. RS Pusri Palembang
30. RS Prima Inti Medika
31. RS Syafira
32. RS Baiturrahim
33. RS Saras Ibnu Sukowati Sragen
34. RSKD Dadi
35. RS Tria Dipa
36. RSUD Karawang

Clinic

1. Klinik Pratama Bekasi
2. Klinik Pratama Bogor
3. Klinik Pratama Cinere
4. Klinik Pratama Plumpang
5. Klinik Pratama Depok
6. Klinik Pratama Jatiwaringin
7. Klinik Pratama Grha Pertamina
8. Klinik Pratama Cakung
9. Klinik Pratama Patra Jasa
10. Klinik Pratama Bintaro
11. Klinik Pratama Rawamangun
12. Klinik Pratama Sinabung
13. Klinik Pratama Yos Sudarso
14. Klinik Pratama IHC BSD

15. Klinik Pratama Nusa Medika Kremboong
16. Klinik Pratama Nusa Medika Djombang Baru
17. Klinik Pratama Nusa Medika Pesantren Baru
18. Klinik Pratama Nusa Medika Puri
19. Klinik Pratama Nusa Medika Tjoekir
20. Klinik Pratama Nusa Medika Ngadiredjo
21. Klinik Pratama Nusa Medika HVA Toeloengredjo
22. Klinik Pratama Nusa Medika Bondoyudo
23. Klinik Pratama Nusa Medika Arjasa
24. Klinik Pratama Nusa Medika Kebun Klaten
25. Klinik Pratama Nusa Medika Watoetoelis
26. Klinik Pratama Nusa Medika Gempolkrep
27. Klinik Pratama Nusa Medika Meritjan
28. Klinik Pratama Nusa Medika Modjopanggung
29. Klinik Pratama Nusa Medika Ajong
30. Klinik Pratama Nusa Medika Lestari
31. Klinik Pratama Agosarie
32. Klinik Pratama NSM Mahakam
33. Klinik Pratama Sebelas Medika Probolinggo
34. Klinik Pratama NSM Djatiroto
35. Klinik Pratama Sebelas Medika Situbondo
36. Klinik PHC Kebraon
37. Klinik PHC Benowo
38. Klinik PHC Banjarmasin
39. Klinik PHC Tanjung Perak
40. Klinik PHC Tanjung Emas
41. Klinik PHC Pedurungan
42. Klinik Pratama TPK Koja
43. Klinik JICT
44. Klinik Pratama Pelabuhan Jakarta
45. Klinik Pelabuhan Tanjung Priok
46. Klinik Pelabuhan Cirebon
47. Klinik Pelabuhan Banten
48. Klinik Pelabuhan Panjang
49. Klinik Pelabuhan Bengkulu
50. Klinik Pelabuhan Jambi

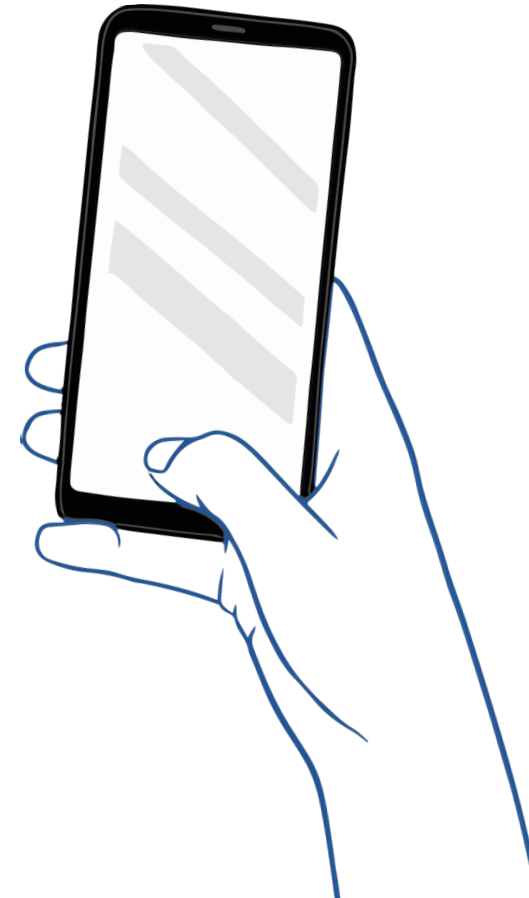
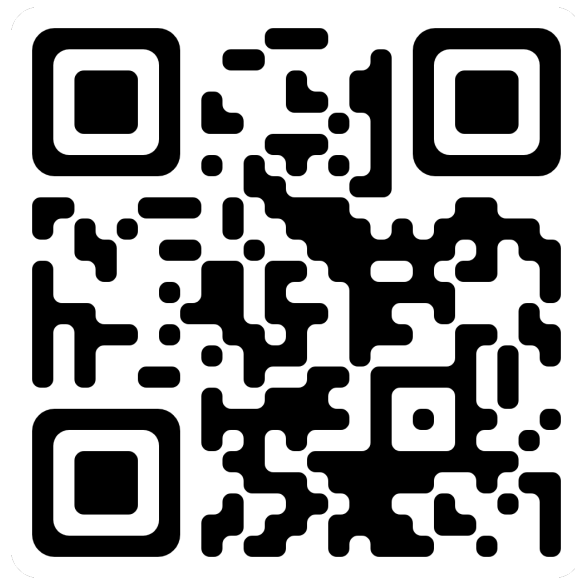
51. Klinik Pelabuhan Palembang
52. Klinik Pelabuhan Teluk bayur
53. Klinik Pelabuhan Pontianak
54. Klinik Bakti Timah Parit Tiga
55. Klinik Bakti Timah Toboali
56. Klinik Medika Stannia Belinyu
57. Klinik Pratama Bakti Timah Pangkalpinang
58. Klinik Pratama Bakti Timah Prayun
59. Klinik Pratama Bakti Timah Manggar
60. Klinik Krakatau Medika Pandeglang
61. Klinik Krakatau Medika Cilegon
62. Klinik Krakatau Medika Serang
63. Klinik Rolas Medika Jember
64. Klinik Rolas Medika Banjarsari
65. Klinik Rolas Medika Kalikempit
66. Klinik Rolas Medika Siliragung

QR Code



Company Profile Member of IHC Group

SCAN QR CODE



Thank You!

Get closer with us!

 pertamedika.co.id

 [PertaminaBinaMedikalHC](https://www.facebook.com/PertaminaBinaMedikalHC)

 [pertaminabinamedika](https://www.instagram.com/pertaminabinamedika)

 [Pertamedika](https://twitter.com/Pertamedika)

 [Pertamedika IHC](https://www.youtube.com/PertamedikaIHC)

